

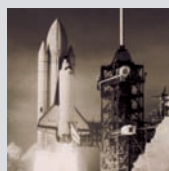
*Four GPCs in one System !*

# GPC quattro™

*Put 4 Columns in Parallel  
- Enhance your Sample Throughput*

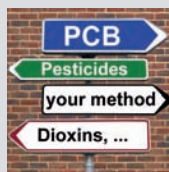
SOLUTIONS BY 

## *The advantages at a glance:*



Use GPC quattro™ to quadruple **sample throughput** compared to sequential handling.

That means more than 40 samples in eight hours!

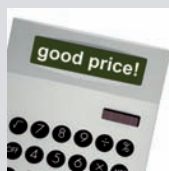


Profit from the **flexibility** GPC quattro™ offers you.

Adjust the system to your exact requirements.



GPC quattro™ is designed to be **user-friendly**: It can be handled very easily, always providing a **fast and comprehensive overview** of current processes.



GPC quattro™ is **great value**.

# GPC quattro™

## Put 4 Columns in Parallel - Enhance your Sample Throughput

Using the LCTech GPC quattro™ you can run up to four GPC columns in parallel. Either use the same method for all of them or define independent conditions for each one.

The GPC quattro™ will do an excellent job in your laboratory: Easy to handle and equipped with smart safety features it will help you to increase your productivity and save time and money.



Have a look at  
[www.Lctech.de](http://www.Lctech.de) !



### It is that easy!

Simply select a stored method or define a new one, inject the samples, start the run ...

... and let the system clean up the samples fully automatically.

Dimensions (WDH): 65x45x42 cm (without columns)



1 Mountings for up to four GPC columns



2 Color touchscreen and function keys



3 Fourfold sample injection



4 Easily accessible pump unit - simply lift upper electronic unit

Further details about the GPC quattro™



www.Lctech.de

www.Lctech.de

## It's up to you to define the scope of your system:

In the **basic version** up to four columns can be operated in parallel, but started independently.

**Upgrade 1** allows independent programming of each column, i.e. you can work with four different methods, column types and eluants.

**Upgrade 2** with three additional waste level sensors is the right choice if you want to work with up to four different eluants.

**Upgrade 3** enables you to visualize data and processes on a PC.

GPC quattro™ is perfect for a wide range of applications, e. g.

- Pesticides
- PAH
- PCB
- Plasticizers
- Dioxins
- Zearalenone

in food, feed and environmental samples, ... and surely also your method.

**Let's talk about it!**

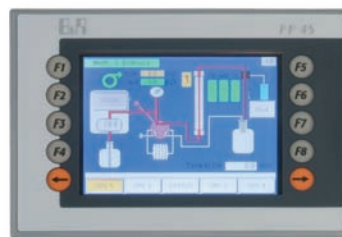
Feel free to contact us anytime for further information or a quotation.

You will be surprised by the attractive price of the GPC quattro™!

## Handling via touchscreen is easy and comfortable:



The initial screen gives an overview of all four columns. You can even start the chosen column at once.



Need to see more details? Follow the run of each column in real time - with time bar, numeric time to go and a continuously updating schematic depiction of flow plath and method status.



The screen shows all current data for flow rate, fore and main run, tailing and pressure.



With the alphanumeric keypad input parameters can be defined in no time.

Choose the data to change by a simple touch - and create your own storable method.



LCtech provides with various **GPC columns** - in different lengths and filling heights, filled or unfilled and with suitable filling kits.

## Ordering information

**GPC quattro™**, basic version, for 4 GPC columns in parallel, one waste level sensor included

P/N 11389

**Upgrade 2**, 3 additional waste level sensors

P/N 11392

**Upgrade 1**, for 4 different methods and column types

P/N 11391

**Upgrade 3**, data and process visualization on PC via VNC viewer

P/N 11393